

WOLLONGONG TOWN HALL

The Music Lounge



Pip Rigter, Production and Technical Manager
prigter@merrigong.com.au

TABLE OF CONTENTS

VENUE INFORMATION 3

SEATING CAPACITY 4

DIMENSIONS 4

STAGE SPECIFICATIONS..... 4

 Dimensions..... 4

ACCESS EQUIPMENT 4

 Elevated Work Platform 4

 EWP Restrictions..... 4

LIGHTING 4

AUDIOVISUAL FACILITIES..... 5

AUDIO FACILITIES 5

DRESSING ROOMS 6

FURNITURE 6

GENERAL INFORMATION..... 7

 Laundry facilities..... 7

 Smoking..... 7

 Technical Staff 7

 Duty Technician 7

 Award Conditions 7

 Workplace Health and Safety..... 7

 Height Safety..... 7

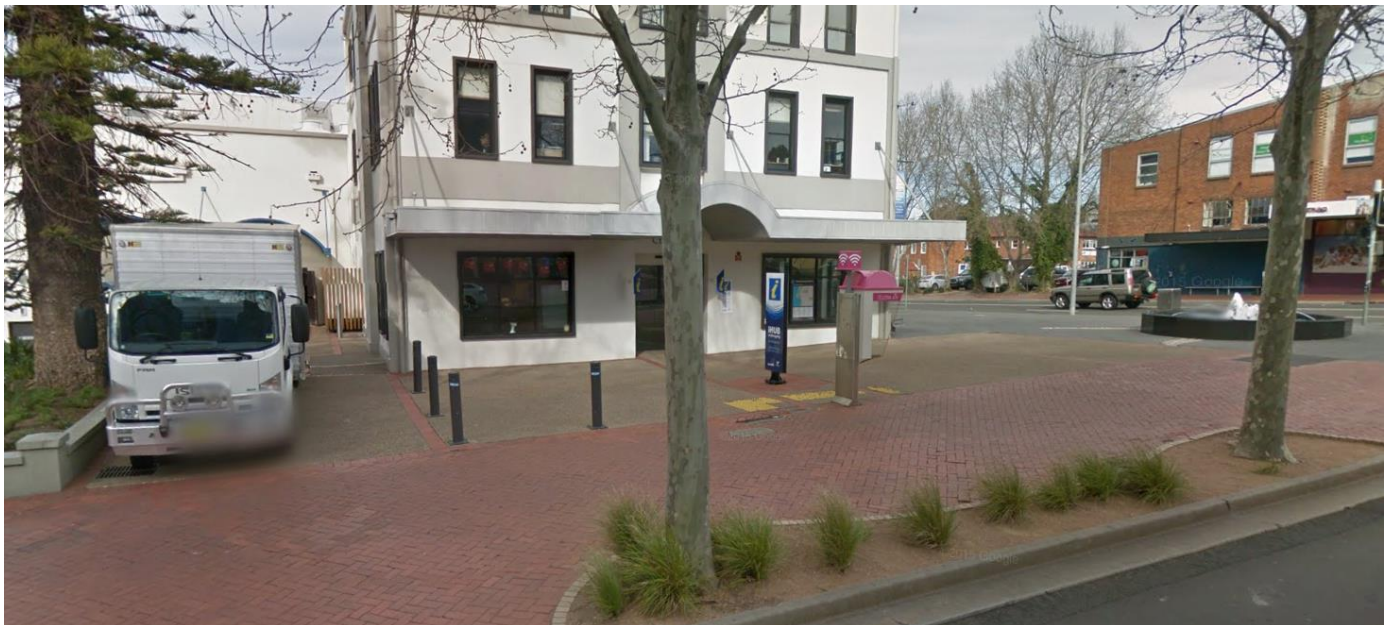
VENUE INFORMATION

The Music Lounge is Wollongong's premium music venue secretly tucked away inside the Wollongong Town Hall. A sophisticated and intimate setting to be captivated by renowned stars of the music scene, with its own private bar.

The Music Lounge has the capacity to seat 120 patrons and have 32 standing patrons for cabaret style events.

The loading dock is accessed via Crown Street, pictured below.

Load in on the flat through standard double doors (2070H x 1665W).



SEATING CAPACITY

STANDARD LAYOUT	152 (120 seated at tables, 32 standing at cocktail tables)
THEATRE STYLE	165
STANDING	270
BOOTH/EXPO STYLE	17

***Any changes to the standard layout must be confirmed in advance. Please contact the Programming Team or Technical and Production Manager to view other layouts.**

DIMENSIONS

Room	WIDTH	12m
	LENGTH	16m

STAGE SPECIFICATIONS

Brief Stage Description

The Music Lounge stage is topped with carpet, and skirted to match the rest of the drape in the room. Off Prompt Side of stage there is a 2m² piece of staging that houses the Yamaha C5 piano when not in use.

Dimensions

Stage	WIDTH	6m
	DEPTH	3m

ACCESS EQUIPMENT

Elevated Work Platform

JLD, Drivable lifter

EWP Restrictions

One Merrigong staff member must be in the area at all times the EWP is in use. EWP only to be used by trained personnel.

LIGHTING

Lighting consists of the following:

- 3 mini fresnels
- 3 S4 Junior's 25/50
- LED strips for backlight/stage wash
- LED Truss Warmers

No additions can be made to this.

Lighting Control

ETC Nomad on a touchscreen laptop

AUDIOVISUAL FACILITIES

Projectors

1x Epson EB-X120 projector, 2700 Ansi Lumens, permanently rigged and focused at back wall.
HDMI connection only, at control box.

AUDIO FACILITIES

Speakers FOH

2 x D&B E-12 Wide dispersion mounted on truss
2 x D&B E8 Speakers
1 x D&B B6 Sub Cabinet

Amplifiers

2 x D&B D20 4 x Channel amplifier

Console

1 x Soundcraft SI Expression 1 digital console 16 channel
1 x Soundcraft stagebox mini 32 at stage

Spot speakers / foldback

4 x D&B E8 Speakers
4 x Meyer Dual Active 10" high power monitor speaker (Subject to Availability)

Playback equipment

Laptop

Audio Equipment

1 x Radial Pro USB DI
2 X Behringer Ultra DI D120
2 x DPA4099P
4 x Shure 57A Microphone
4 x Shure 58A Microphone
2 x Shure QLXD4 Handheld systems
3 x K&M Boom Microphone Stand
3 x K&M Round Base Microphone Stand
1 x Shure PGA 7 Piece Drum Mic Kit

Please note noise levels are not to exceed 85dB. The Duty Technician has final say and you will be expected to reduce the volume if asked.

DRESSING ROOMS

2 Medium sized dressing rooms with fully accessible bathrooms and mirrors.

FURNITURE

20 x 800mm tables (Black)

6 x Cocktail Tables (Black)

150 Chairs (Orange)

36 Chairs (Black)

GENERAL INFORMATION

Laundry facilities

There are no laundry facilities located onsite. Facilities at IPAC may be used with prior arrangement.

Smoking

The Arts Precinct (including IPAC, the Art Gallery and Wollongong Town Hall) is a smoke free zone. By law, smoking can only take place in designated smoking areas.

Technical Staff

Merrigong Theatre Company requires a min of 1 x technical staff member to be present when the Hirer is in the venue. Additional staff may be requested by the Hirer or as dependent on production requirements.

Duty Technician

The Duty Technician holds ultimate responsibility for all Hirers whilst in the venue.

Award Conditions

All technical staff at Merrigong Theatre Company work under the Live Performance Award 2010. The Duty Technician will ensure staff take adequate breaks and conditions are met. Extra charges will occur for missed meal breaks and overtime hours.

Workplace Health and Safety

The Hirer shall ensure safe work practices are adhered to by their staff/volunteers and defer to the venue staff if there is a question of safety and/or damage to the venue or equipment.

All visiting Hirers must undergo a venue specific induction in regard to fire evacuation and workplace health and safety. A copy of the Fire Evacuation Safety Procedures are available on request.

All electrical equipment entering the building must carry the appropriate test and tag documentation. Every Hirer must provide Merrigong Theatre Company with appropriate risk assessment documentation.

Height Safety

Height Safety equipment as required is provided as part of the venue hire. Hirer staff must be inducted if its use is required and must be used under supervision from a Merrigong Theatre Company employee.