

WOLLONGONG TOWN HALL

Main Auditorium



Pip Rigter, Production and Technical Manager
prigter@merrigong.com.au

Elly Turner, Head of Audio
eturner@merrigong.com.au

Taryn Brown, Head of Lighting
tbrown@merrigong.com.au

TABLE OF CONTENTS

VENUE INFORMATION 3

AUDITORIUM 4

SEATING CAPACITY 4

DIMENSIONS 5

STAGE SPECIFICATIONS 5

 Dimensions 5

 Extension 5

ACCESS EQUIPMENT 5

 Elevated Work Platform 5

 EWP Restrictions 5

LIGHTING 5

STAGE LANTERNS 7

AUDIOVISUAL FACILITIES 7

AUDIO FACILITIES 7

OUTLETS 7

ACOUSTIC TREATMENT & DRAPING 8

POWER 8

DRESSING ROOMS 8

FURNITURE 8

 Tables 8

 Chairs & Seating 8

GENERAL INFORMATION 9

 Laundry facilities 9

 Smoking 9

 Technical Staff 9

 Duty Technician 9

 Award Conditions 9

 Workplace Health and Safety 9

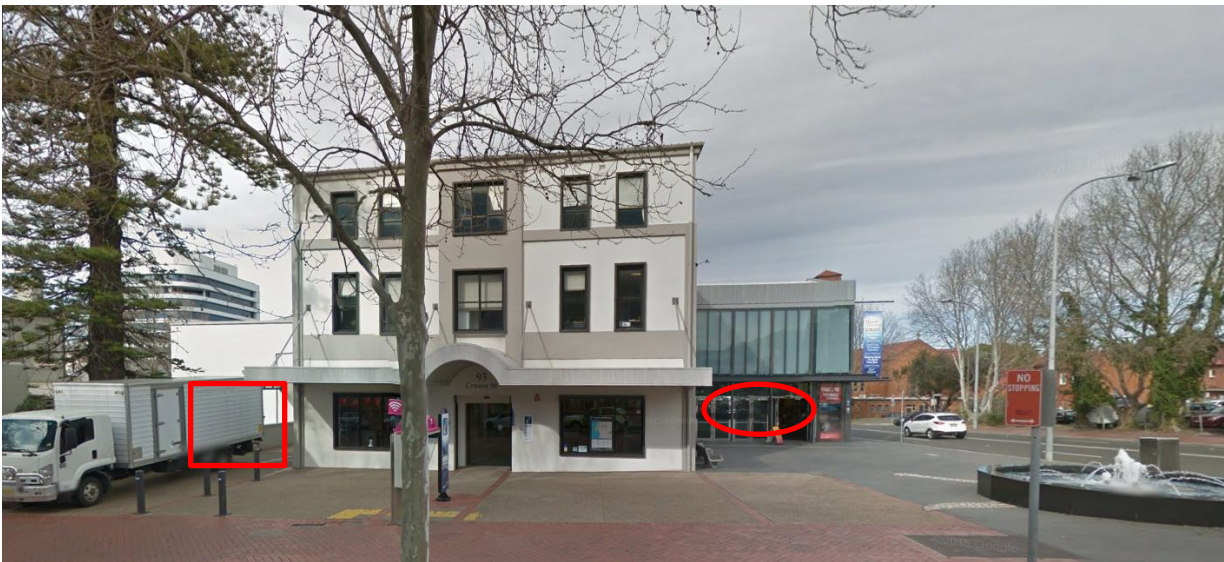
 Height Safety 9

VENUE INFORMATION

The Wollongong Town Hall is located in central Wollongong on the corner of Crown & Kembla Streets. It hosts two performance spaces; The Music Lounge & Main Auditorium, and two meeting spaces; The Ocean Room & The Wattle Room.

Wollongong Train Station is a 15 minute walk west along Burelli Street. The nearest bus stop is out front of the IPAC building on Burelli Street.

The loading dock for both venues is via The Music Lounge. There is a ramp up to the Main Auditorium. Please speak to the Technical and Production Manager if you have any large items, as other arrangements may need to be made due to tight corners.

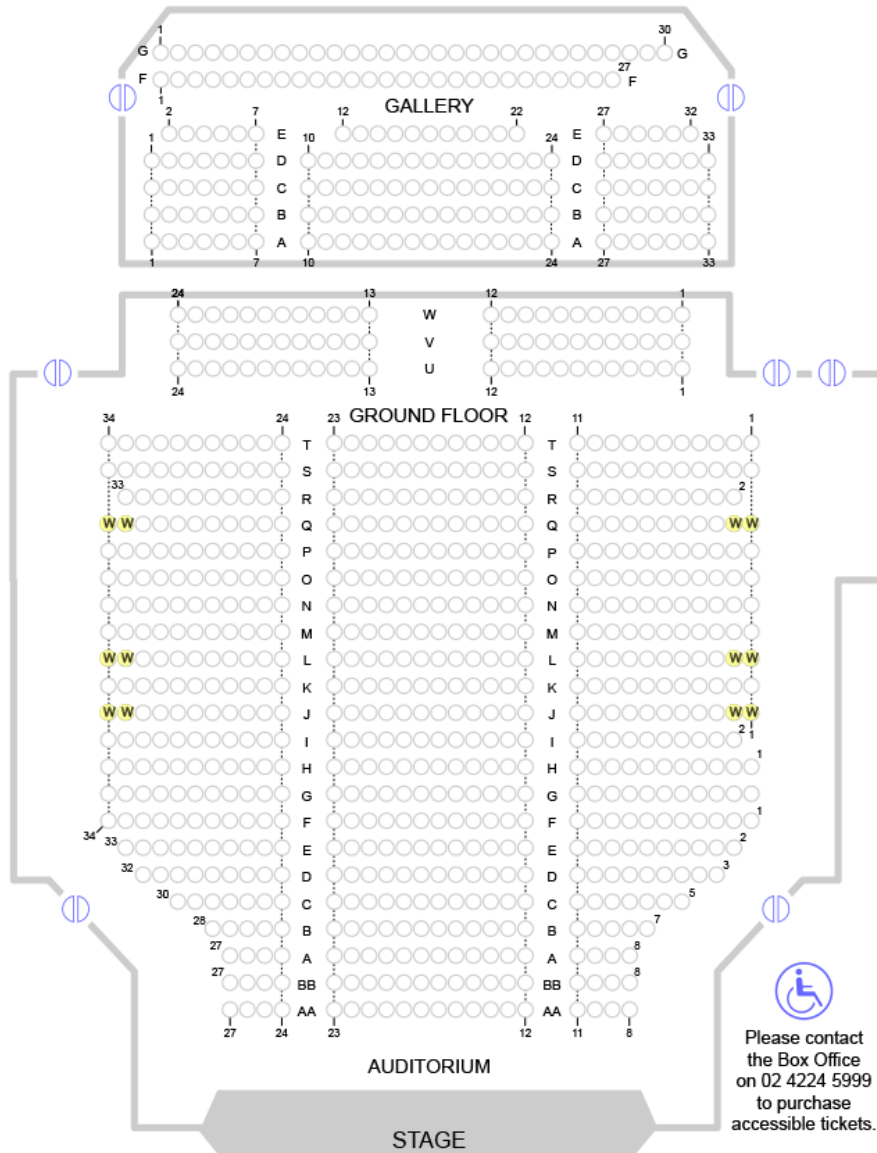


Above: Town Hall Loading Dock via The Music Lounge (left), Main Entrance (right)

Please note there is a temporary weight restriction on the on-stage and FOH truss. No additional lighting, drapes or other equipment can be flown until further notice. We are operating under a reduced LX plan. Please contact the Technical and Production Manager for further details if required.

AUDITORIUM

The Wollongong Town Hall Main Auditorium seats 873 in its Standard Seating mode. This can be increased up to 944 by adding rows U, V, & W upon consultation with the Program Manager and Technical & Production Manager. The whole ground floor level of seating is flat. Both the Auditorium and Gallery level can be accessed by either stairs or lift. If the extension stage is to be used rows AA & BB are removed, reducing capacity by 46 seats. Ops position is usually located in the Prompt Side end of U & V rows.



SEATING CAPACITY

Theatre style	873 standard, or 944 (incl. under gallery, gallery and balcony)
Standing	720
Table seating	384
Booth/Expo style	32

DIMENSIONS

Floor Width	24 metres
Length	25 metres

STAGE SPECIFICATIONS

Brief Stage Description

The stage is raked at a 3% gradient. It is hardwood with anti-slip coating.

There are three motorized stage extension pieces that can be set in numerous configurations.

****The stage cannot be screwed into. Please speak to the Technical & Production Manager for solutions.***

Dimensions

Stage Width	12 metres	
Depth*	5.2 metres	*excluding Organ
Height of stage	0.9 metres	
Stage to underside of truss	5.5m upstage & 5.7m downstage	

Extension

3 Extension Pieces Available – please note they do not sit flush next to each other. There is a small divot between pieces.

Width	3.77 metres
Depth	1.915 metres

The above extension pieces are temporarily unavailable. We can provide a separate extension piece 8m wide & 2m deep instead.

ACCESS EQUIPMENT

Elevated Work Platform

JLD, drivable

EWP Restrictions

One Merrigong staff member must be in the area at all times the EWP is in use. EWP only to be used by trained personnel.

LIGHTING

Lighting Control

ETC Ion Classic Console

Dimmers

Total Dimmers 24 channels LSC EKO (Spare dimmer may be available – please contact Head of Lighting)

Rigging

1 x 9m long Box truss Hung in FOH positions
Overhead motorised truss rig – contact for more details

No additions can be made to the current rig. Please contact Technical & Production Manager for further details.

DMX	1 x Jands DD8 Opto Splitter
PATCH	1 x Jands WM Patch (42 points)
	24 x Patch Points on FOH 1 Truss
	3 x Patch Points in each Slot

MERRIGONG
THEATRE
COMPANY

ILLAWARRA
PERFORMING
ARTS CENTRE

WOLLONGONG
TOWN HALL

STAGE LANTERNS

PROFILES				
MAKE	MODEL	DETAILS	WATTAGE	TOTAL
Selecon	Pacific	Angle: 12° -28°	1000w	7
ETC	Source 4 Lustr Series 2	Angle: 26°		10
FRESNEL'S				
Assorted	Fresnel	All have barn doors	1000w	14
Selecon	Arena	All have barn doors	2000w	3
MOVERS				
Robe	Robin 300+ Wash			5

We are currently working with a limited lighting rig. Please contact the Head of Lighting for further details.

AUDIOVISUAL FACILITIES

Projectors

2x Christie LWU502 projectors focused on the side walls either side of stage.

Currently not able to be rigged – speak to Technical and Production Manager for further details.

AUDIO FACILITIES

Speakers FOH

2 x Ev Xi2123 (Flown L and R)

Amplifiers

4 x EV Precision Series P2000, amps

2 x Ev NetMax N8000, processor

Console

Soundcraft Si Expression 1 with Mini stagebox 32 at stage level

Spot speakers / foldback

2 x JBL PRX612m Powered speakers (Subject to Availability)

4 x Meyer Active Dual 10" high power monitor speakers (Subject to Availability)

Playback equipment

Laptop

Wired microphones

6 x Shure SM58 Microphone

2 x Shure SM57 Microphone

Radio microphones

4 x Shure QLXD4 SM58 Handheld radio mic

OUTLETS

2 x CAT5 from PS Control Room to Truss and FOH Mix Position to Truss

24/8 XLR Patch from Far DSP to FOH mix Position

ACOUSTIC TREATMENT & DRAPING

Full stage carpet available

All black wool 520gsm IFR with 0 fullness.

Type	Material	Colour	Width	Height	Quantity
Leg	Wool	Black	2.20 metres	8.00 metres	2 (pair)
Smother	Wool	Black	15.0 metres	8.50 metres	1
Drape	Wool	Black	17.00 metres	4.70 metres	1
Drape	Wool	Black	10.00 metres	5.20 metres	1

POWER

2 X 32amp 3-phase outlets in OP side stage

2 x 32amp 3-phase outlets in bio box (can be extended to P side stage)

4 x 32amp 3-phase outlets in auditorium.

Separate power for audio (brown sockets) located side stage and at operating position.

DRESSING ROOMS

4 x Medium sized dressing rooms with bathrooms and mirrors.

FURNITURE**Tables**

- 50 Large Trestle Tables (765mm x 2135mm)
- 5 Medium Trestle Tables (610mm x 1215mm)
- 2 Small Trestle Tables (460mm x 660mm)
- 24 Round Tables (10 pax)
- 8 Cocktail Tables
- 4 Coffee Tables

Chairs & Seating

- 790 Grey Chairs
- 100 Red Program Chairs
- 18 Lounge Chairs
- 6 Ottomans

GENERAL INFORMATION

Laundry facilities

There are no laundry facilities located onsite. Facilities at IPAC may be used with prior arrangement.

Smoking

The Arts Precinct (including IPAC, the Art Gallery and Wollongong Town Hall) is a smoke free zone. By law, smoking can only take place in designated smoking areas.

Technical Staff

Merrigong Theatre Company requires a min of 1 x technical staff member to be present when the Hirer is in the venue. Additional staff may be requested by the Hirer or as dependent on production requirements.

Duty Technician

The Duty Technician holds ultimate responsibility for all Hirers whilst in the venue.

Award Conditions

All technical staff at Merrigong Theatre Company work under the Live Performance Award 2010. The Duty Technician will ensure staff take adequate breaks and conditions are met. Extra charges will occur for missed meal breaks and overtime hours.

Workplace Health and Safety

The Hirer shall ensure safe work practices are adhered to by their staff/volunteers and defer to the venue staff if there is a question of safety and/or damage to the venue or equipment.

All visiting Hirers must undergo a venue specific induction in regard to fire evacuation and workplace health and safety. A copy of the Fire Evacuation Safety Procedures are available on request.

All electrical equipment entering the building must carry the appropriate test and tag documentation. Every Hirer must provide Merrigong Theatre Company with appropriate risk assessment documentation.

Height Safety

Height Safety equipment as required is provided as part of the venue hire. Hirer staff must be inducted if its use is required and must be used under supervision from a Merrigong Theatre Company employee.